



# Port Norris

# The Past for the Future

## HISTORICAL SOCIETY

The Port Norris Historical Society is dedicated to preserving the history of our unique village, located in Commercial Township in Cumberland County, NJ.

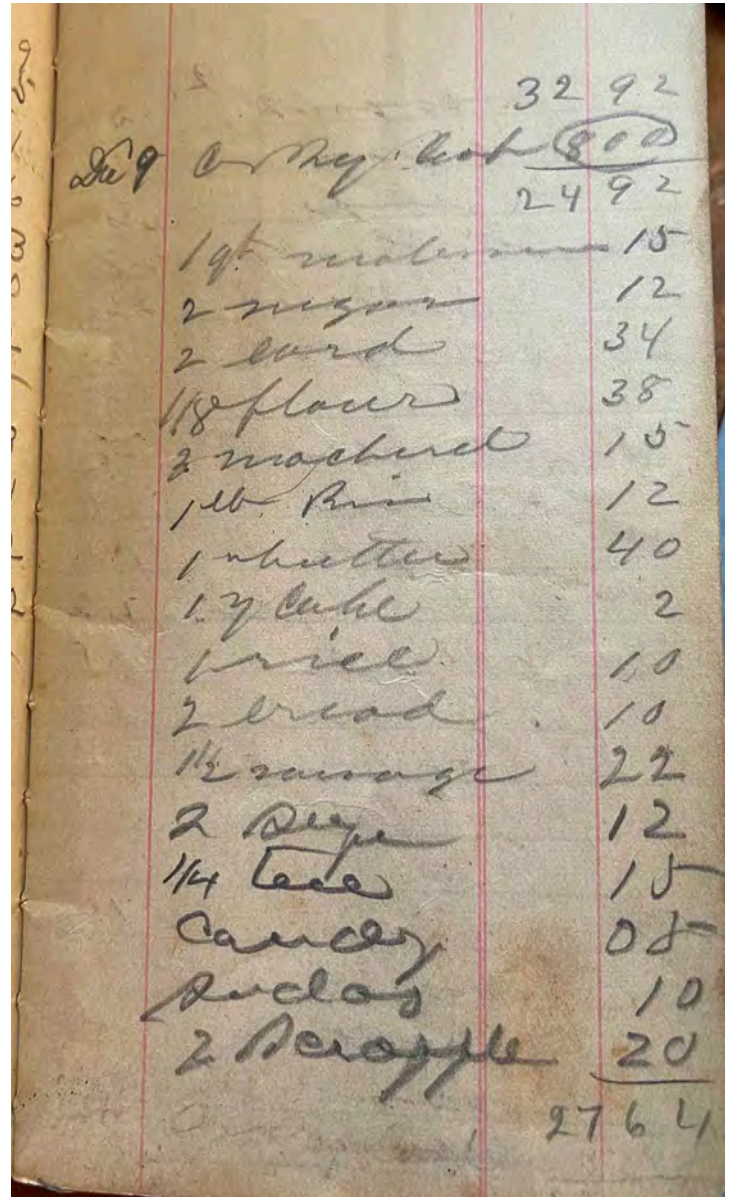
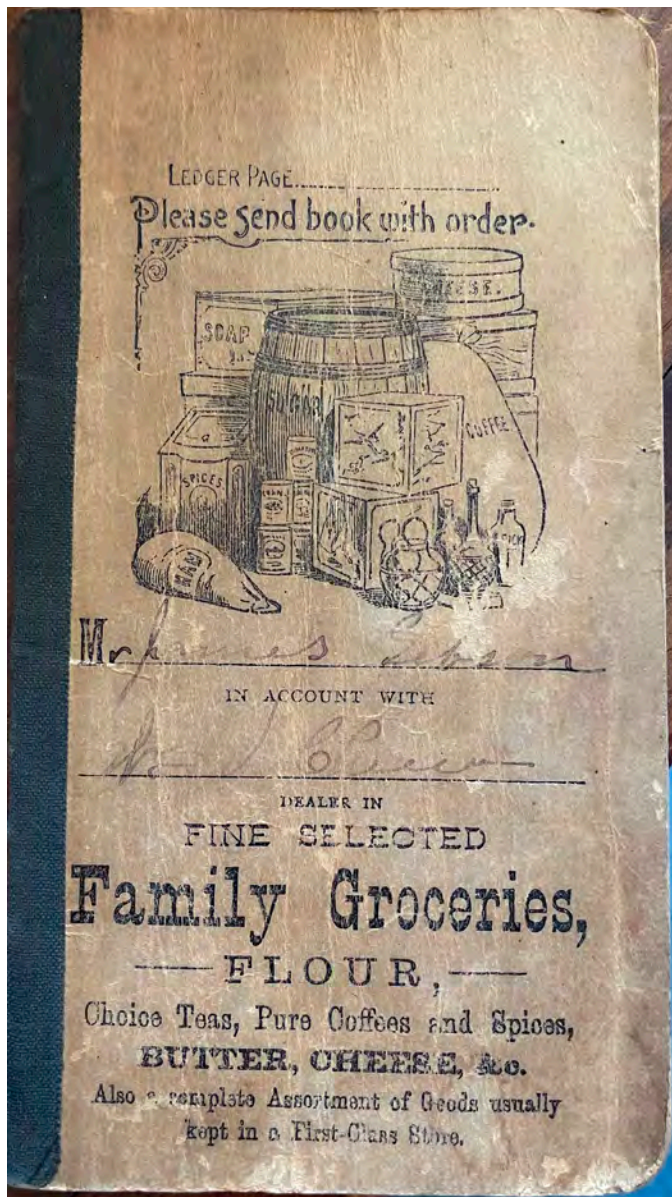
**NEXT MEETING SEPTEMBER 13, 2022**



## The Good Ole Days!

The following images speak for themselves.

A member shared these grocery books with me. No dates. Here are a few pages.



The Good Ole Days! Continued

		38	76
8	1/2 butter		20
	3 macaroni		15
	5 sugar		30
	2 lard		6
9	1 oil		10
	1 coffee		32
	1 lard		17
11	2 sugar		12
	1/2 flour		38
	2 soap		10
13	1 oil		10
	2 sugar		12
	1 lard		17
15	2 sugar		12
	1/2 flour		38
16	1 coffee		32
	4 sugar		24
	2 lard		34
		42	45
	Or My Cash	9	00
	Balance	33	45

	Balance	36	08
Nov 25	My Cash	10	00
	Balance	26	08
	1 oil		10
	4 sugar		24
	1 codfish		12
	1/4 tea		15
Jan	1 coffee		32
27	1/2 flour		38
	1/2 butter		20
	6 piepels		6
	1 y powder		15
	1 brown		35
	1 brush		6
29	1 oil		11
	2 mutton		25
	2 lard		32
	1 cracker		10
	4 sugar		24
		29	19



LEGENDS NOMINATION FORM

MAIL TO: Port Norris Historical Society  
PO Box 187  
Port Norris, NJ 08349

Name of Nominee: \_\_\_\_\_ Date (s) \_\_\_\_\_

Business Affiliations: \_\_\_\_\_

Civic Contributions: \_\_\_\_\_

Church Positions: \_\_\_\_\_

Political Positions: \_\_\_\_\_

Work Experiences: \_\_\_\_\_

Organizations: \_\_\_\_\_

Personal Information: \_\_\_\_\_

Other: \_\_\_\_\_

## Legends 2023

Nominations for Port Norris Legends 2023 are open.

(Names of people to be nominated as a Port Norris Legend may be submitted at any time of the year). Nominations received by October 1, 2022 will be presented at the October 11, 2022 monthly meeting. Voting and selection of finalists will take place at the November 8, 2022 meeting. To nominate a person for consideration please fill out the form on our website [historicportnorris.org/legends-form.htm](http://historicportnorris.org/legends-form.htm)

# LEGENDS AWARDS HELD APRIL 30, 2022

## Alvina J Baum

August 3, 1934 - June 1, 2022

Recognized as a Living Legend of Port Norris on April 30, 2022

Click to view video

<http://historicportnorris.org/legends-87.htm>



## Elizabeth Hoffman

Recognized as a Living Legend of Port Norris on April 30, 2022

Click to view video

<http://historicportnorris.org/legends-86.htm>



## Georgianna (Georgie) Corona

Recognized as a Living Legend of Port Norris on April 30, 2022

Click to view video

<http://historicportnorris.org/legends-88.htm>



## Elizabeth (Lizzy) Hoffman Lore

Recognized as a Legend of Port Norris on April 30, 2022

Click to view video

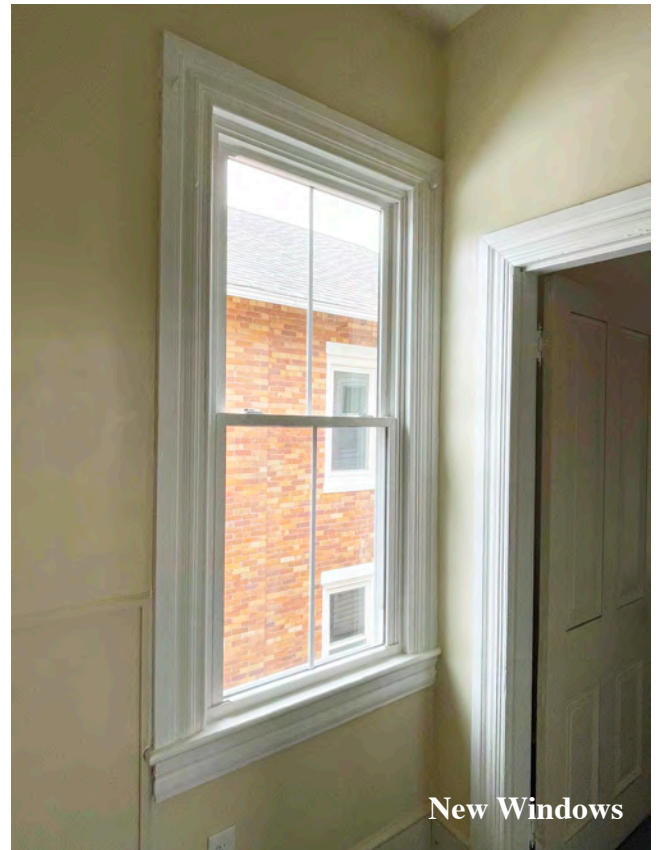
<http://historicportnorris.org/legends-89.htm>



## Take a look.

Renovation of the headquarters of The Port Norris Historical Society continues. Upstairs, steady progress is being made. Two back rooms have had floors, walls and trim painted. Repairs and painting have been done to the ceilings. It is exciting to see some our collections on display.

Still to be done is the replacement of windows. We are once again offering the opportunity to donate the cost of a replacement window as a gift or a lovely way to remember someone special. A plaque with the donor's name will be mounted next to the window.



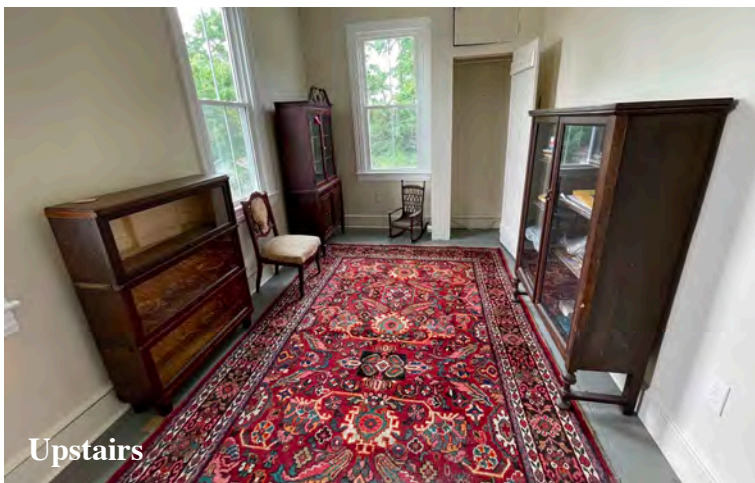
New Windows



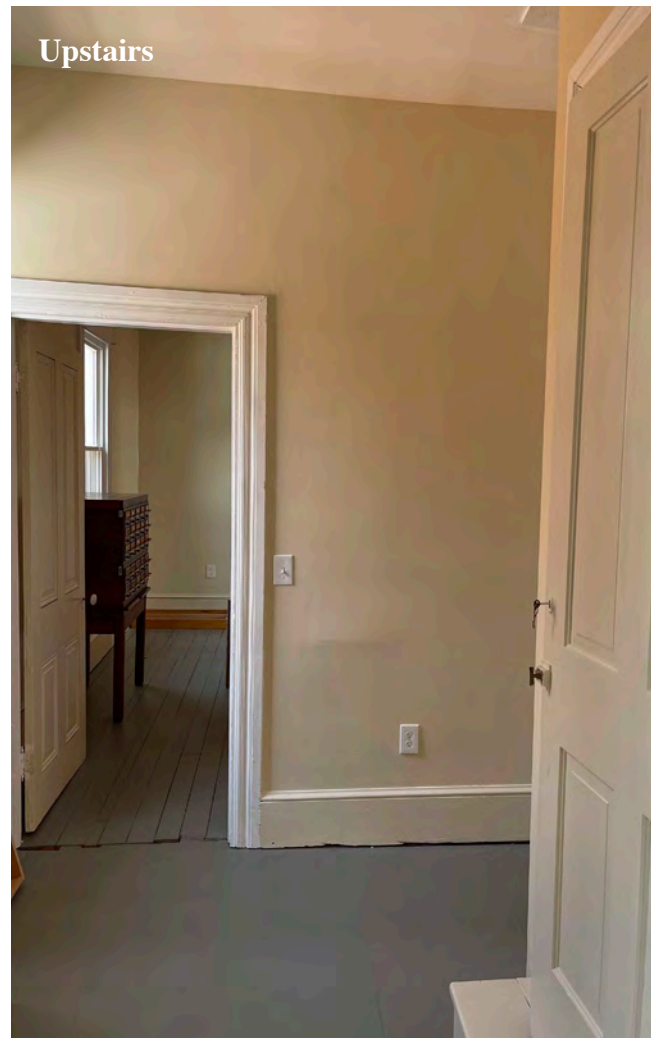
Window Plaque



Main Meeting Room



Upstairs



Upstairs

## Special Family Photos

**B**elva Ann Prycl is a talented artist and wonderful friend of the PNHS, once local and now living in Maine. She has donated two of her beautiful paintings, the wood schooner model (seen in the photo on page 4) and most recently, the vintage photos seen here.

Belva has also written and illustrated three books, *Times and Tides*, *Water Tales*, and *Passages*. They are all memories of her family and time spent on the Jersey coast, all of which she has signed and donated copies for our future library.



I found this video from 2001 on YouTube. Produced by Citizens United, Bayshore Artists - Don Friel, **Belva Prycl**, Glenn Rudderow, Pat Witt

[youtube.com/watch?v=n9xs0qUNSX4](https://youtube.com/watch?v=n9xs0qUNSX4)

Originally produced in 2001, this film acts as a retrospective into our heritage. In the documentary Bayshore Artists: Celebrating Our Sense of Place, local artists share their concerns for the future preservation of this important but fragile natural and cultural landscape.



*Your Mother and her Father*

*Belva Tozour and her father Captain Charles Tozour on board the Starfield or the Newkirk, built in 1886.*



*Lore & Elsie, a party on an oyster schooner.*

Special Family Photos Continued



Wartfield "CAPT" CHAS TOZOUR 1934  
(Belva Ann Penn Prycl, his grand-daughter)  
Captain Tozour owned four  
oyster schooners: The Warfield,  
The Newkirk, the Jerry M. Chance,  
(and a fourth whose name escapes me.)

Thank you, Belva, for this wonderful collection of family photographs. They are a treasure.



**Commercial Township  
Community Day  
Sunday, October 1, 2022  
12 pm - 5 pm**

**See last page for details.**

## Port Norris Pickings

### July 28, 1888

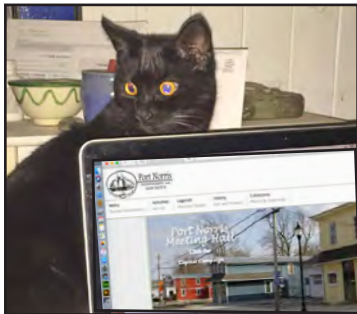
A large number of Mauricetown and Port Norris friends made a surprise visit to the house of Charles Bacon in this place Thursday and presented him with a handsome eight foot extension table. The afternoon was very pleasantly spent. The guest left with well wishes and thanks of Mr. Bacon and family ringing in their ears.

### September 5, 1888

The camp meeting now in session suggests a good story told on two clergymen who presided over critical congregations. Meeting each other on the street one day preacher A said to preacher B in the course of the conversation: "How large is your congregation?" The reply was: "200 and some odd," where upon A said that he was all fired lucky as he had a congregation and they were all odd.

### September 10, 1888

A number of persons took tea at Henry Harris' house yesterday evening. They were Mrs. Amanda Robbins, Mrs. Elizabeth Shropshire, Mr. Wilson Shropshire, of Haleyville, Miss Ella Mckenzie, of Salem; Mr. George Shropshire, of New York, and Miss Lillie Brinathults, of Cedarville.



## NORRIS ASKS

### When did grocery stores become popular?

The first-ever shop approximating what we think of today as a grocery store was Memphis, Tennessee's Piggly Wiggly in 1916.

The 1920s brought a wave of small chain grocery stores including Kroger, Loblaws, and A&P. These stores were counter-service stores that were manned by a few clerks who would fetch items for customers.

Source: [10best.com/interests/food-culture/10-points-grocery-store-history-supermarkets-changed-how-we-shop/](https://10best.com/interests/food-culture/10-points-grocery-store-history-supermarkets-changed-how-we-shop/)

<https://stacker.com/stories/3984/history-supermarket-industry-america>



© Port Norris Historical Society 2022

**A special thank you to Gloria Guidera and Virginia Campbell for their editing talents.**

**Please Note:** Meeting dates and times are posted on the website each month along with the approved minutes from the last meeting. Everyone is always welcome.

## Membership and Renewal for 2022

We would love to add your name to our growing list of members. Please give some thought to joining the PNHS. Membership Fees:

General Individual - \$10. General Family - \$15.  
Benefactor Individual - \$30. Benefactor Family \$35.  
Patron Individual - \$50. Patron Family \$55.  
Student (under age 17) - \$1.00 (no voting privileges)

Membership entitles you to discounts on our merchandise.

Click here to renew or join, [historicportnorris.org/membership.htm](http://historicportnorris.org/membership.htm)

Or mail your check to: Port Norris Historical Society, PO Box 187  
Port Norris, NJ 08349.

Thank you for your support. Membership is key to applying for grants as well as your dollars help us continue with all of our endeavours.

*Membership fees are tax deductible.*

**See us on Facebook and our website**  
[historicportnorris.org](http://historicportnorris.org)

If you are getting this email from a friend and would like to be added to our list, please [click here](#) and we will add you. If we received your email at one of our events, and if you do not wish to receive this newsletter, click here [web@historicportnorris.org](mailto:web@historicportnorris.org), we will remove you from the list. We do not sell or share your email with anyone!

### Officers

Rachel Cobb, President  
Richard Smith, Vice-President  
Gloria Guidera, Corresponding Secretary  
Mary Linda Lacotte, Recording Secretary  
Sam Ricci, Treasurer  
Elizabeth Hoffman, Co-Treasurer

### Trustees

Eileen Bernhardt  
Virginia Campbell  
Faye Hickman  
John Hickman  
Joyce Massey  
Rev. E. Barnes, Lifetime Honorary Trustee

For a complete list of committees see our website. [View Here](#)



# Port Norris

---

## HISTORICAL SOCIETY

Port Norris Historical Society  
PO Box 187  
Port Norris, NJ 08349  
[historicportnorris.org](http://historicportnorris.org)

September 1, 2022

Window Naming Campaign for Port Norris Historical Society.  
The Port Norris Historical Society is a 501(c)(3).

The Port Norris Historical Society has a window naming campaign in progress for 1723 Main Street Port Norris. We have replaced the windows on the lower level of our meeting hall. Now we need to do the upstairs windows.

The cost is \$600.00 for each window. All donated windows will be acknowledged with a plaque by a window. This is a way to pay tribute or in Memorium of a family or friend.

An open house will be planned in the near future.  
All donations are tax-deductible, and the Port Norris Historical Society is a 501(c)(3).

We appreciate your help.

Thank you,  
The members of the Port Norris Historical Society

Mail your check along with the form on the next page to:  
Port Norris Historical Society  
PO Box 187  
Port Norris, NJ 08349

*The Port Norris Historical Society is dedicated to preserving the history of our unique village, located in Commercial Township in Cumberland County, NJ.*





# Port Norris

---

## HISTORICAL SOCIETY

Port Norris Historical Society  
PO Box 187  
Port Norris, NJ 08349  
[historicportnorris.org](http://historicportnorris.org)

Window Campaign for Port Norris Historical Society  
Please fill out the information below for your window plaque.

There is no limit of words.

Your information is needed for signing off on the proof

Name

---

Email

---

Phone

---

Plaque information. PLEASE PRINT CLEARLY.

Use the back if more space is needed.

---

---

---

---

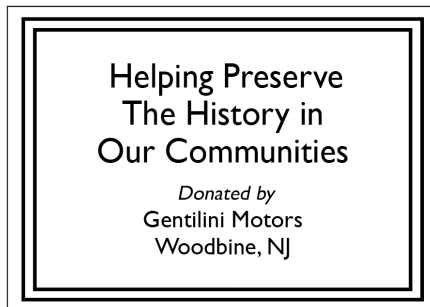
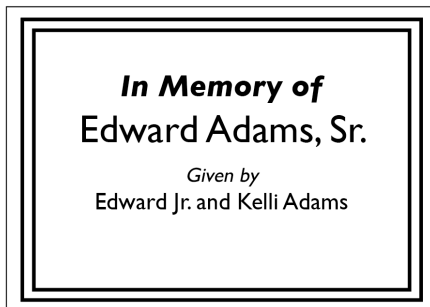
---

---

---

---

### Examples





**Port Norris**  
**HISTORICAL**  
**SOCIETY**

Port Norris Historical Society  
PO Box 187  
Port Norris, NJ 08349  
[historicportnorris.org](http://historicportnorris.org)

September 1, 2022

RE: Donation for fund-raiser for Port Norris Historical Society

Dear Donor:

Thank you for your cash gift of \$600.00 for the window naming campaign for 1723 Main Street Port Norris.

All donated windows will be acknowledged with a plaque by a window.  
A open house will be planned in the near future.  
All donations are tax deductible.

We appreciate your help.

Thank you,  
The volunteers of the Port Norris Historical Society

Mail your check to:  
Port Norris Historical Society  
PO Box 187  
Port Norris, NJ 08349

*The Port Norris Historical Society is dedicated to preserving the history of our unique village, located in Commercial Township in Cumberland County, NJ.*



**BAYSHORE  
CENTER**  
AT BIVALVE  
WHERE HISTORY AND  
THE ENVIRONMENT MEET



## **Car Show**

All Makes and Models Welcome!

No Judging

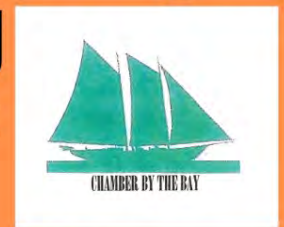
**The A.J. Meerwald is back!  
Come see her all decked out  
in her glory!  
Open 1pm -9pm**

# **Commercial Township 2nd Annual Community Day**

1768 Main St., Port Norris, NJ

**Saturday October 1st**

**Fall Festival** 12pm to 5 pm



**Fireworks  
at the docks at dusk**



**Hayrides  
Childrens Activities  
Music  
Food Trucks  
Oysters  
Local Artisans and  
Crafters**



*Township of Commercial*  
New Jersey  
Small Town Charm, Along the Scenic Maurice River  
Port Norris | Bivalve | Mauricetown | Laurel Lake | Haleyville

This event is sponsored by the Commercial Twp Recreation Committee in conjunction with the Bay Shore Discovery Project and The Chamber by the Sea  
For more information email: [com.rec.committee@gmail.com](mailto:com.rec.committee@gmail.com)